

DETAIL KIT / GPO SOCKET / CROSS

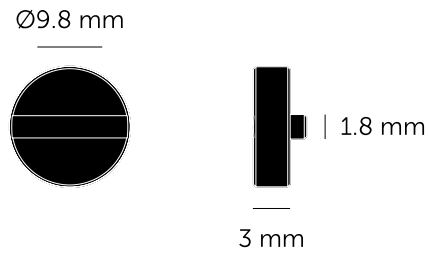
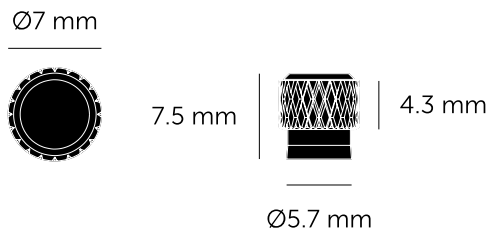
ACTION: DETAIL KIT

KNURL: CROSS

RANGE: DETAIL KIT

A GPO detail kit made from solid metal with our signature diamond-cut cross knurl. To be teamed up with our outlet modules and wall plates to complete your custom electricity product





SPECIFICATIONS

A GPO detail kit made from solid metal with our signature diamond-cut cross knurl. Team up with our switches and dimmers for a cohesive look.

INCLUDED

2x Cross knurl GPO toggle arms
2x Coin screws

FINISH & SKU NUMBERS

finish:

size:

PLEASE NOTE

DISCLAIMER: Always consult a trade professional when installing this product. Buster + Punch is not responsible for the usage or feasibility of installation requirements. This product is not suitable for damp or wet environments.

CARE INSTRUCTIONS

Wipe with a dry lint free cloth with no loose hairs, avoid using any chemicals. Please note that finishes may age naturally with time and regular use.



Ø10 mm



Ø7 mm



2.5 mm

M3



7.5 mm

SPECIFICATIONS

A GPO detail kit made from solid metal with our NEW linear knurl detail. Team up with our switches and dimmers for a cohesive look.

INCLUDED

2 x Linear GPO Toggle Arms
2 x Torx caps
1 x Multi-tool

FINISH & SKU NUMBERS

finish:

size:

PLEASE NOTE

DISCLAIMER: Always consult a trade professional when installing this product. Buster + Punch is not responsible for the usage or feasibility of installation requirements. This product is not suitable for damp or wet environments.

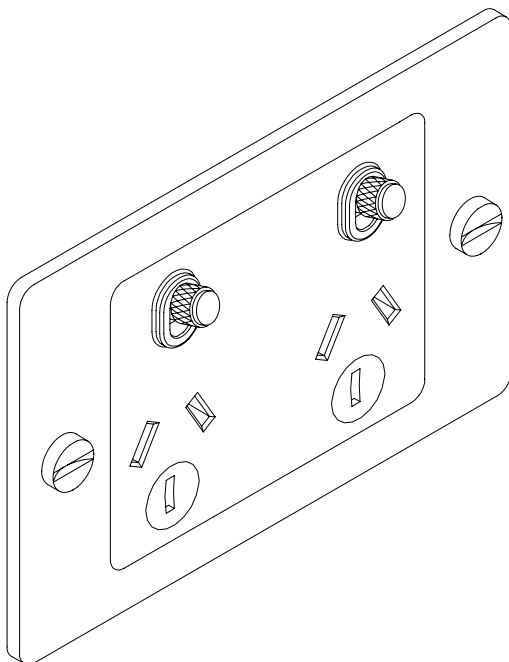
CARE INSTRUCTIONS

Wipe with a dry lint free cloth with no loose hairs, avoid using any chemicals. Please note that finishes may age naturally with time and regular use.



ELECTRICITY ANZ GPO / SOCKET

INSTALLATION MANUAL



BUSTERANDPUNCH.COM/AU
L0161

EN

TECHNICAL SPECIFICATION

2G GPO / SOCKET / SWITCHED

250VAC / 10a max / Class II

IMPORTANT NOTES

READ BEFORE INSTALLATION

1. All wiring and installation must adhere to the latest local and national regulations.
2. Must be installed by a competent and qualified Electrician.
3. Do not exceed the rated values listed on the product.
4. Indoor use only.
5. Remove all USB Cables from Charger when not in use.
6. To reduce the risk of discoloration or tarnishing, avoid installation on wet plaster.



AS/NZS 3112:2017
AS/NZS 3133:2013 + A1:2014 + A2:2016

WARRANTY INFORMATION

The warranty period extends two (2) years from the date of the original purchase.

RECYCLING ELECTRICAL PRODUCTS

Buster and Punch encourages all its customers to make note of this symbol and avoid putting any waste electrical goods in your domestic waste bin or container. Please ensure you take your waste electrical goods to a suitable facility for disposal.



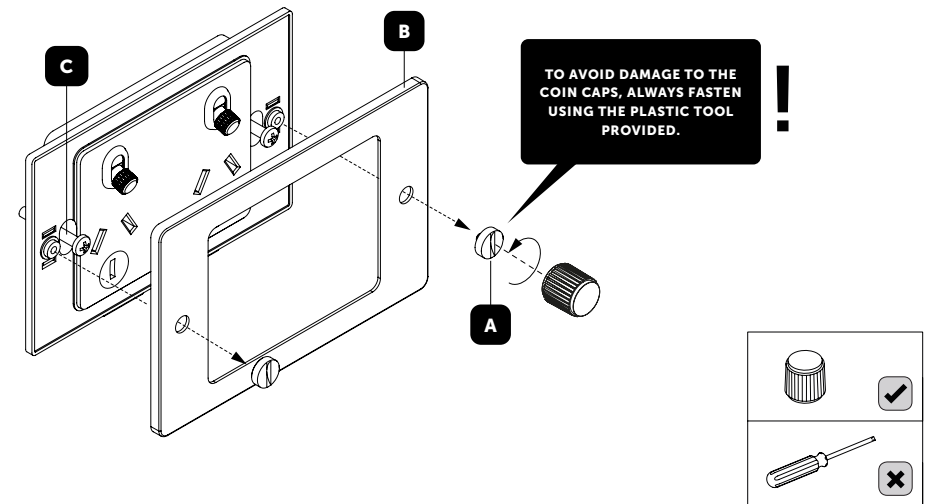
- 1** BEFORE COMMENCING WORK, ISOLATE THE MAINS POWER SUPPLY AT THE CIRCUIT BREAKER.



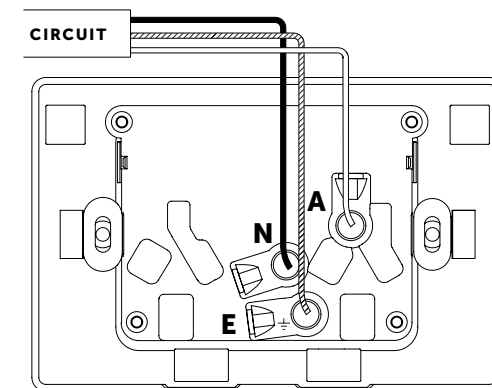
CAUTION:
Verify power supply is OFF before proceeding.


- 2** IF UNIT IS TO BE USED AS A REPLACEMENT FOR AN EXISTING PRODUCT, REMOVE EXISTING UNIT FROM ITS LOCATION AND DISCONNECT THE WIRING.

- 3** REMOVE THE UNIT FROM ITS PACKAGING. REMOVE THE COIN CAP SCREWS (A) USING TOOL PROVIDED. THIS WILL RELEASE FACE PLATE (B) TO REVEAL THE LOCATIONS FOR THE MOUNTING SCREWS REQUIRED FOR INSTALLATION (C).

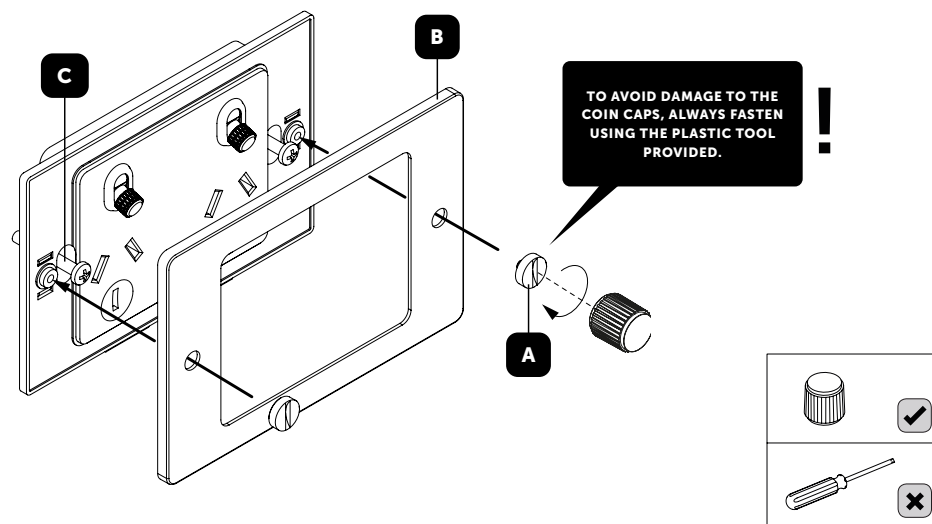


- 4** CONNECT THE WIRES AS SHOWN IN WIRING DIAGRAM BELOW. USE GREEN/YELLOW SLEEVING ON EARTH CONDUCTORS THAT ARE NOT INSULATED. ENSURE TERMINALS ARE PROPERLY TIGHTENED AND NO BARE WIRE IS VISIBLE. PUSH BACK UNIT INTO MOUNTING BOX, MAKING SURE THAT NO WIRES BECOME TRAPPED.



A  Active / Live (Red or brown) | **N**  Neutral (Black or blue) |  Earth (Green or yellow)

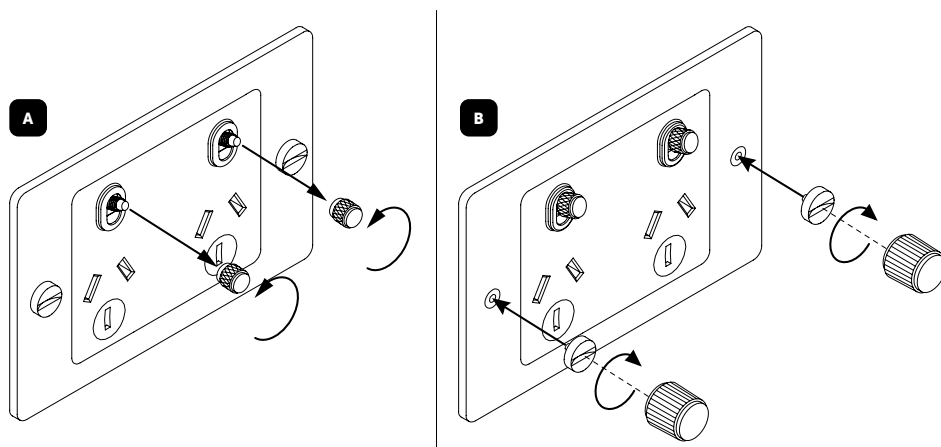
- 5** USE A SCREWDRIVER TO FIX THE UNIT ONTO THE BACKBOX VIA THE SUPPLIED MOUNTING SCREWS (C). FIT THE FACE PLATE (B), AND SECURE USING THE COIN CAP SCREWS (A) USING THE TOOL PROVIDED.



6 **OPTIONAL: BLING YOUR SOCKET**

REQUIRES DIMMER DETAIL KIT.

- A. Remove the socket toggles simply by unscrewing each by hand in an anticlockwise direction. Replace with identical components from the detail kit, available in 5 finishes.
- B. Remove the coin caps using the plastic tool provided. Replace with identical components from the detail kit, available in 5 finishes.



- 7** **ONCE INSTALLATION IS COMPLETE, RECONNECT THE MAINS POWER SUPPLY AT THE CIRCUIT BREAKER.**



[end. **ORDINARY**]