

## DETAIL KIT / DIMMER / CROSS

---

**ACTION: DETAIL KIT**

---

**KNURL: CROSS**

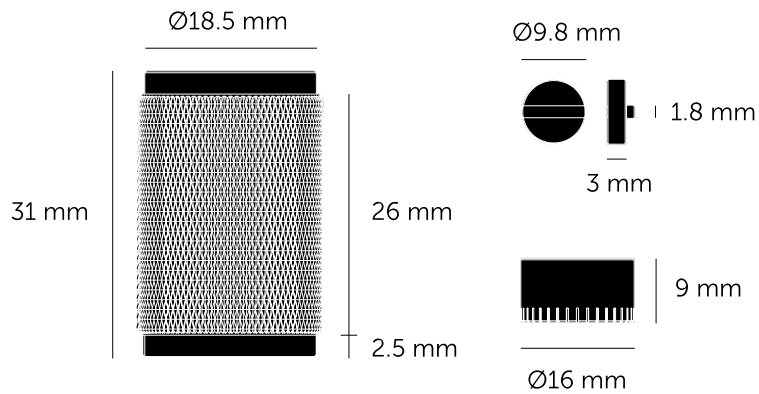
---

**RANGE: DETAIL KIT**

---

A dimmer switch detail kit made from solid metal. To be teamed up with our dimmer modules and wall plates to complete your custom electricity product.





**SPECIFICATIONS**

**INCLUDED**

1 x Dimmer Detail Kit

**FINISH & SKU NUMBERS**

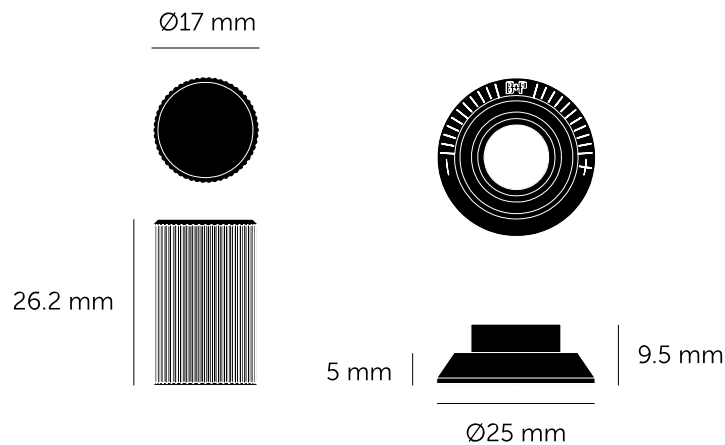
sku:	finish:	size:
ZDK-02635	● black	1G
ZDK-05636	● brass	1G
ZDK-09638	● smoked bronze	1G
ZDK-07637	● steel	1G

**CARE INSTRUCTIONS**

Wipe with a dry lint free cloth with no loose hairs, avoid using any chemicals. Please note that finishes may age naturally with time and regular use.

**PLEASE NOTE**

DISCLAIMER: Always consult a trade professional when installing this product. Buster + Punch is not responsible for the usage or feasibility of installation requirements. This product is not suitable for damp or wet environments.



#### SPECIFICATIONS

Our NEW Linear knurl dimmer switch detail kit made from solid metal, complete with dimmer nut. To be teamed up with our dimmer modules and wall plates to complete your custom electricity product.  
Combine with Torx screw plate details to finish your switch.

#### INCLUDED

1 x Linear Dimmer Knob  
1 x Linear Dimmer Cosmetic Nut  
1 x Linear Dimmer Lock Nut

#### FINISH & SKU NUMBERS

sku:	finish:	size:
RDK-024522	● black	1G
RDK-054522	● brass	1G
RDK-454522	● smoked bronze	1G
RDK-074522	● steel	1G
RDK-144522	● white	1G

#### CARE INSTRUCTIONS

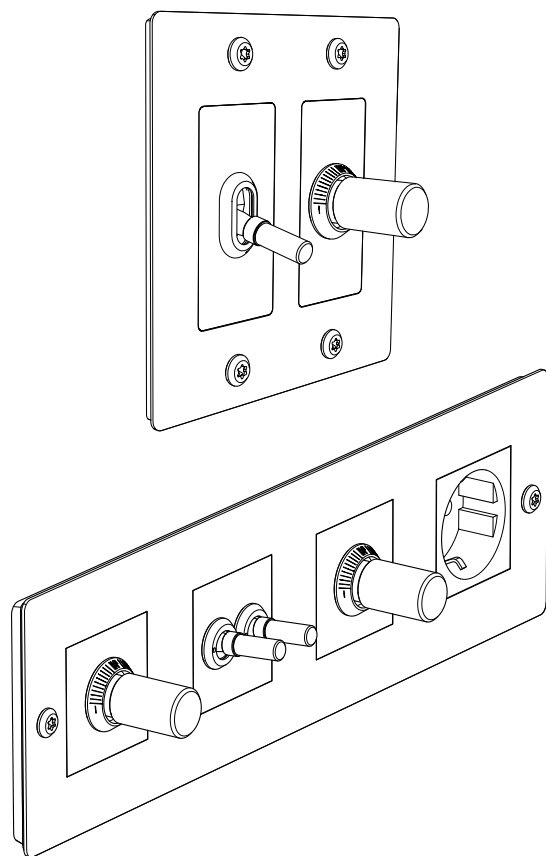
Wipe with a dry lint free cloth with no loose hairs, avoid using any chemicals. Please note that finishes may age naturally with time and regular use.

#### PLEASE NOTE

DISCLAIMER: Always consult a trade professional when installing this product. Buster + Punch is not responsible for the usage or feasibility of installation requirements. This product is not suitable for damp or wet environments.



**ELECTRICITY**  
MODULAR PLATE ASSEMBLY



**BUSTERANDPUNCH.COM**

**CONTENTS**

**US / CANADA**

**2**

**EUROPE**

**4**

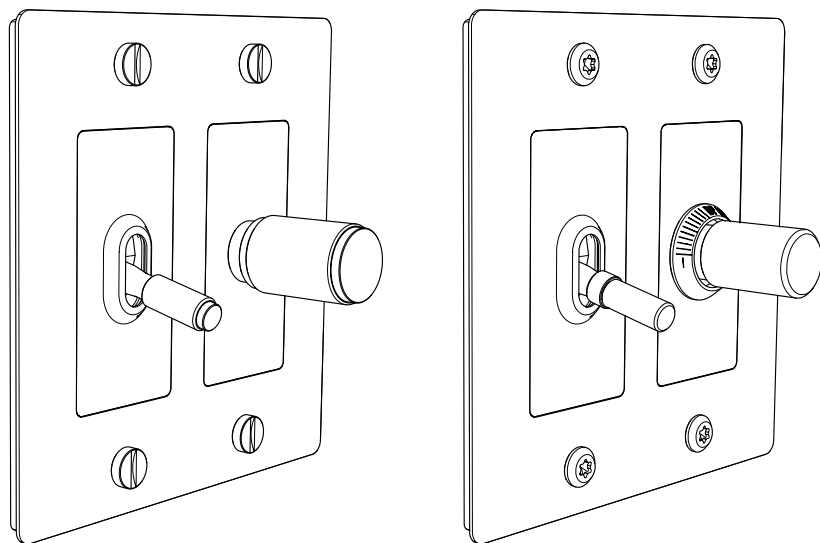
[end. **ORDINARY.** ]



## US ELECTRICITY

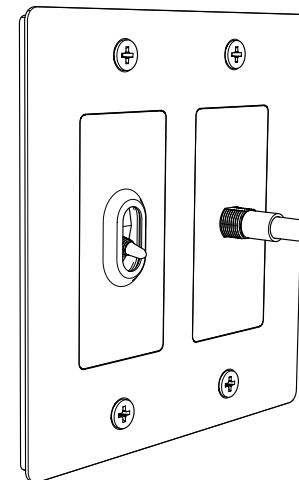
### CROSS / LINEAR DETAILS KIT

INSTRUCTION MANUAL US  
MANUEL D'UTILISATION É.-U.  
MANUAL DE INSTRUCCIONES (EE. UU.)



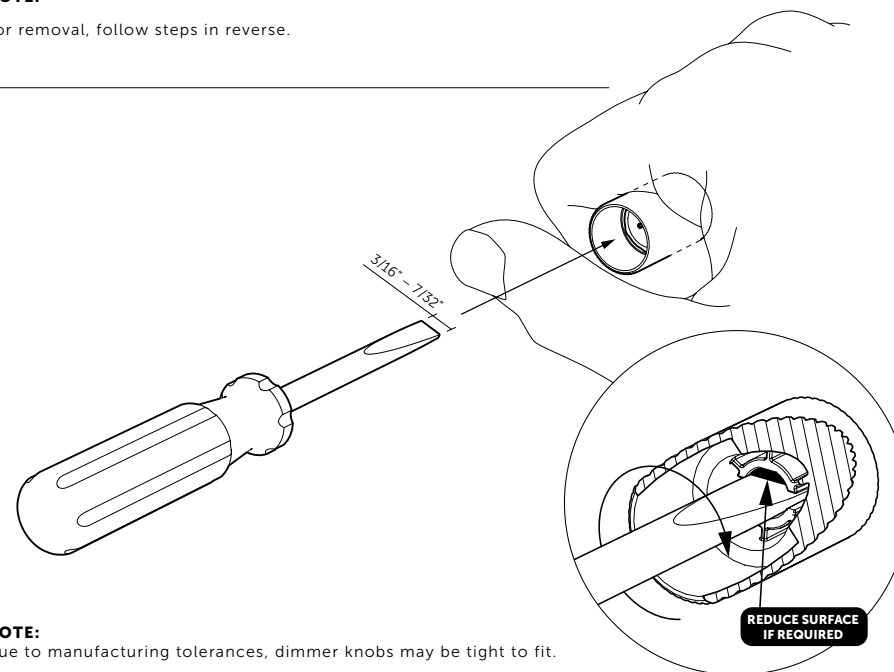
US.BUSTERANDPUNCH.COM  
L0260

For wiring and plate installation, refer to module instruction manual.



#### NOTE:

For removal, follow steps in reverse.



#### NOTE:

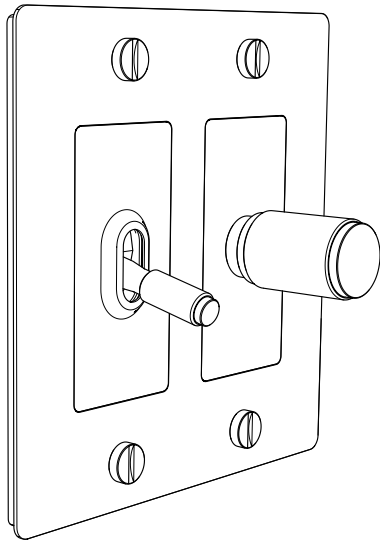
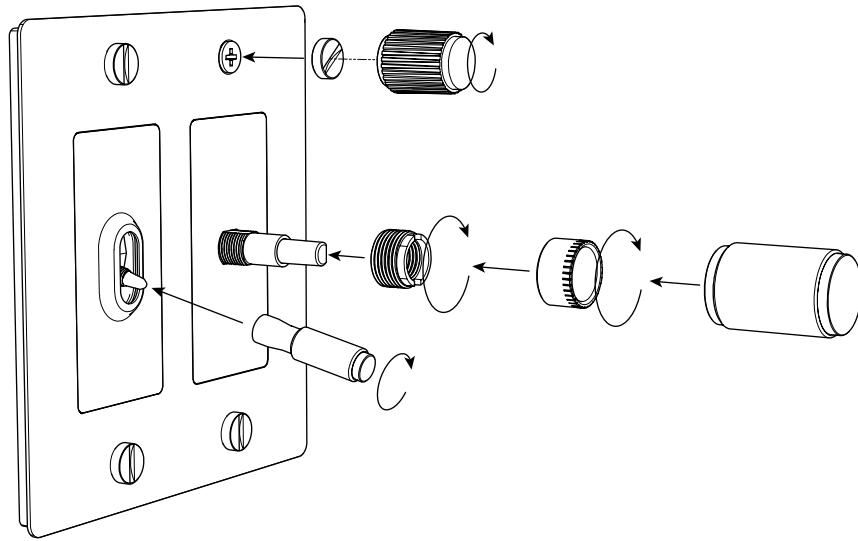
Due to manufacturing tolerances, dimmer knobs may be tight to fit.

To allow for easier assembly, insert a  $\frac{3}{16}'' - \frac{7}{32}''$  (5 – 5.5mm) flat head screwdriver and rotate 360° to remove excess material from the flat section of the insert.

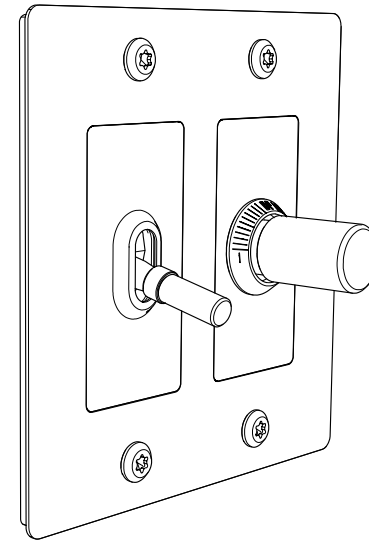
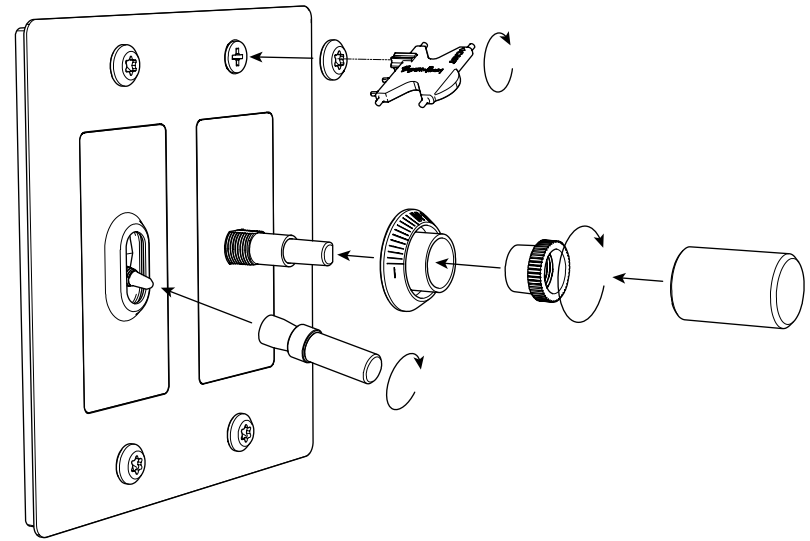
There will be some resistance (a little more than turning a key in a lock) and a small amount of material may come loose – this is normal.

Ensure screwdriver is held straight to avoid misalignment and off-center rotation when installed.

### CROSS DETAILS:

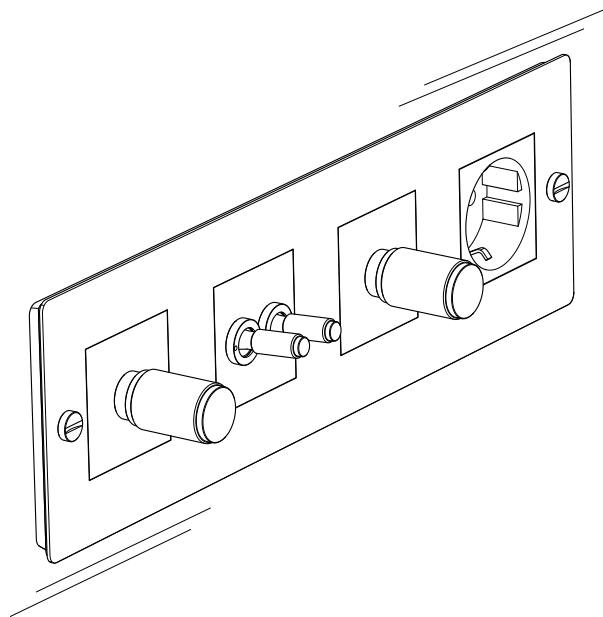


### LINEAR DETAILS:



**BUSTER + PUNCH**  
LONDON

**EU ELECTRICITY**  
Modular Assembly



**BUSTERANDPUNCH.COM**  
L0216



## RECYCLING ELECTRICAL PRODUCTS

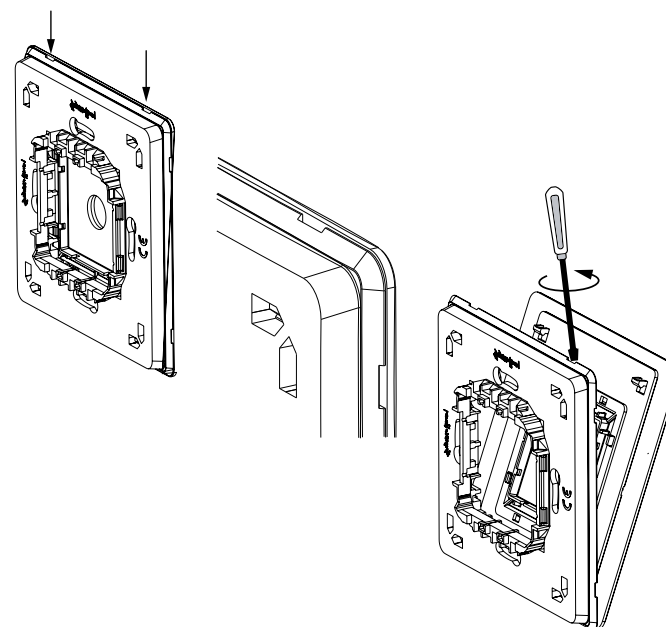
Buster + Punch encourages all of its customers to make note of this symbol and avoid putting any waste electrical goods in your domestic waste bin or container. Please ensure you take your waste electrical goods to a suitable facility for disposal.



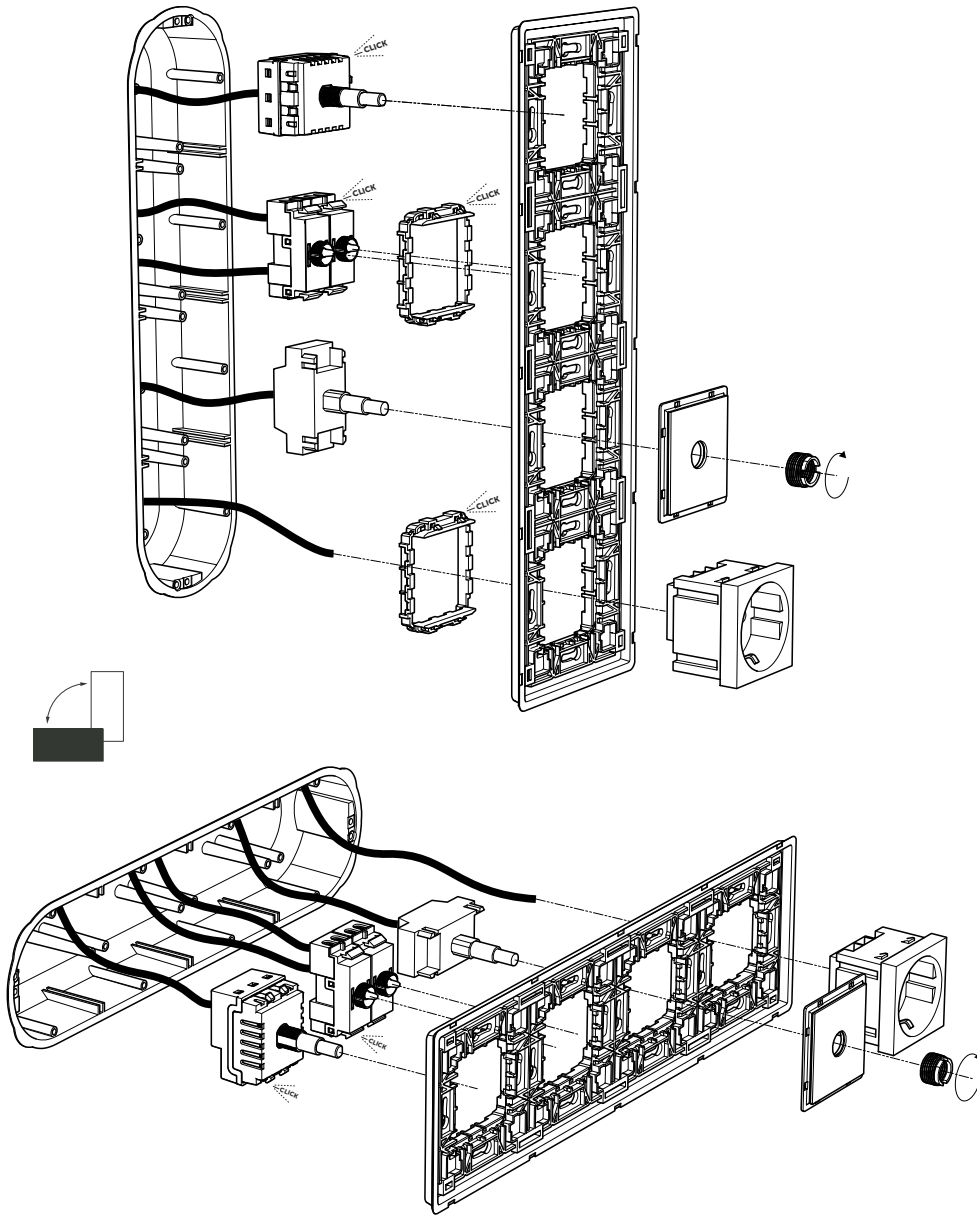
**BEFORE COMMENCING WORK, ISOLATE THE  
MAINS POWER SUPPLY AND REMOVE THE  
FUSE BOX OR SWITCH OFF THE CIRCUIT  
BREAKER IN CONSUMER UNIT.**



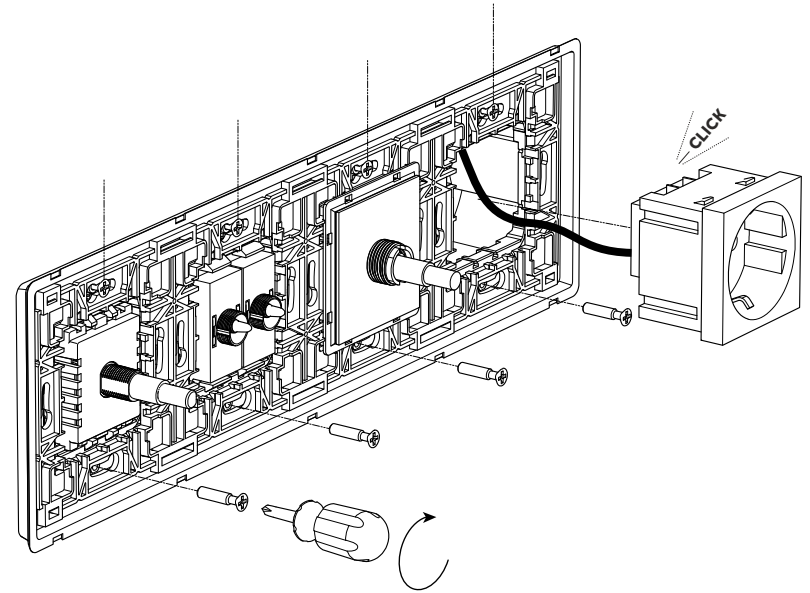
**1**



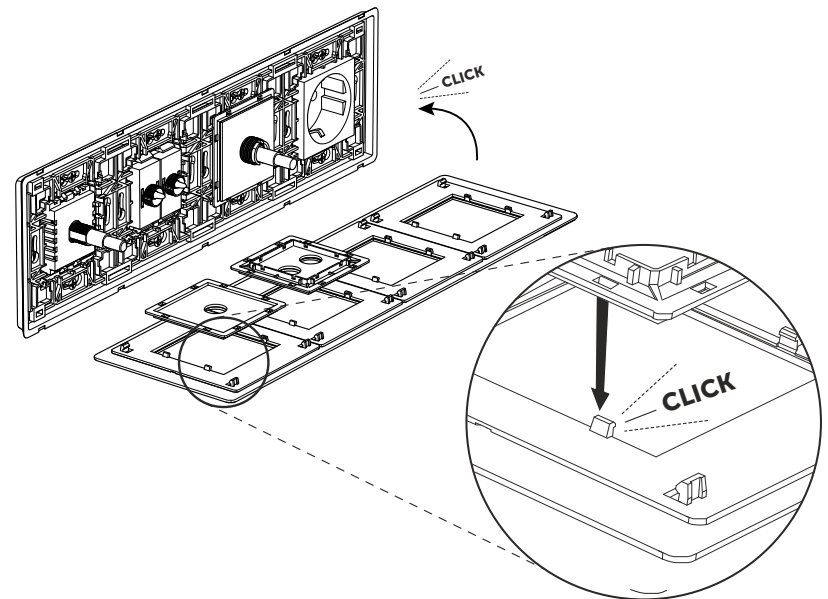
2



3

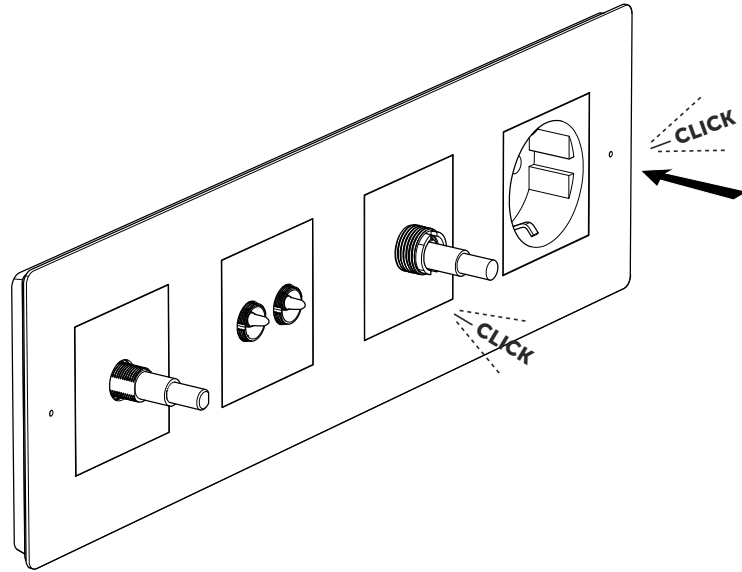


4





5



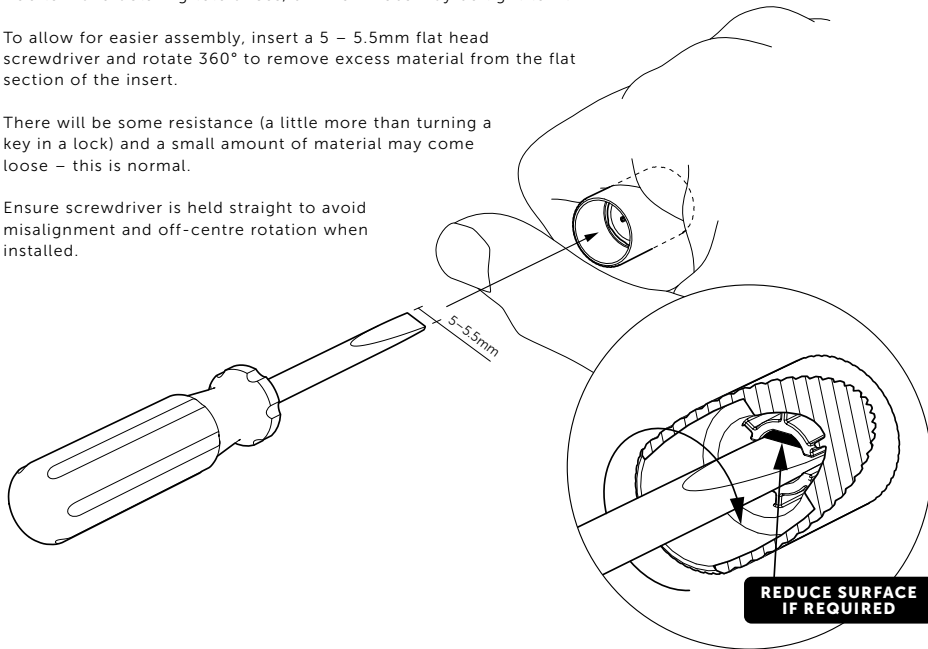
**NOTE:**

Due to manufacturing tolerances, dimmer knobs may be tight to fit.

To allow for easier assembly, insert a 5 – 5.5mm flat head screwdriver and rotate 360° to remove excess material from the flat section of the insert.

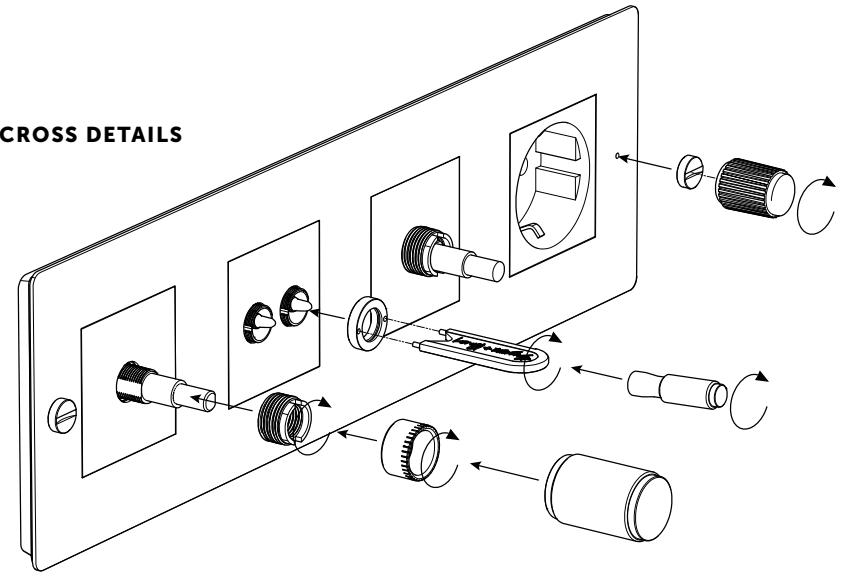
There will be some resistance (a little more than turning a key in a lock) and a small amount of material may come loose – this is normal.

Ensure screwdriver is held straight to avoid misalignment and off-centre rotation when installed.

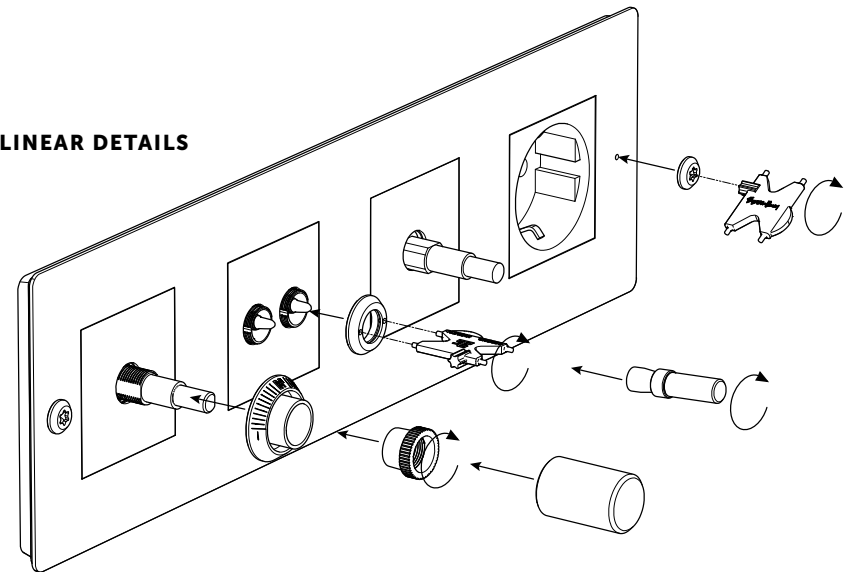


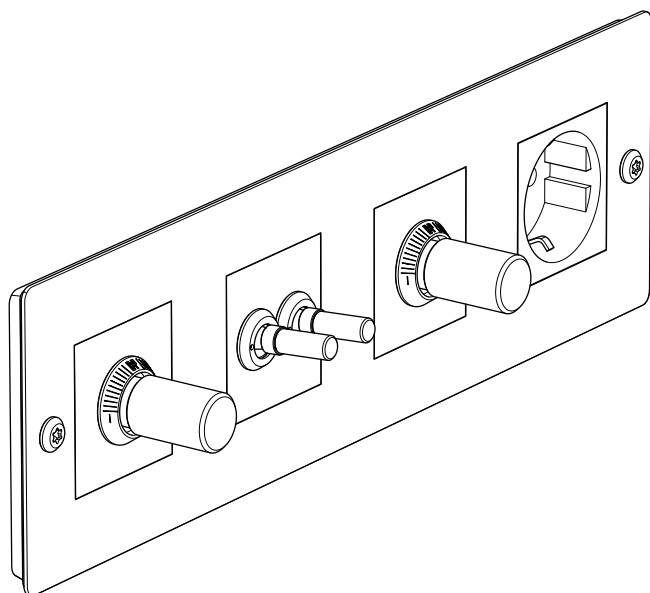
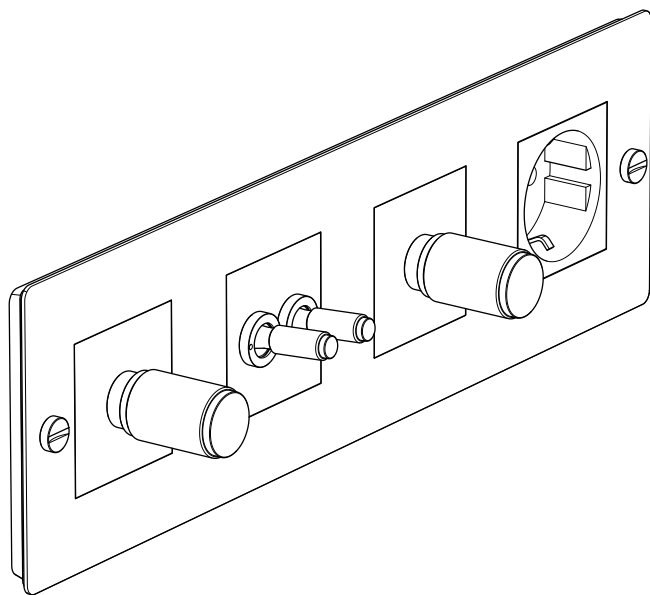
6

**CROSS DETAILS**



**LINEAR DETAILS**





[ end. **ORDINARY.** ]