

SUBIACO RESTORATION

EST. 1981

LVL & Framing

RETAIL PRICE LIST

Prices inc. GST

SUBLACO RESTORATION

EST. 1981

ITI - LVL E13.2 H2S Treated

Metsä Kerto® LVL S-beam, proudly distributed by Subiaco Restoration is a laminated veneer lumber product used in all types of construction projects, from new buildings to renovation and repair. Kerto LVL is light, strong and dimensionally stable. Metsä Kerto® LVL S-beam comes from the sustainably managed and PEFC-certified forests of Metsä Group's Finnish forest owner members, ensuring that the origin of the raw material is traceable.



*STOCKED

DIMENSIONS (MM)	LENGTHS (M)	L/M
200x45	4.8 / 6.0	\$ 30.60
200x63	4.8 / 6.0	\$ 42.82
240x45	4.8 / 6.0	\$ 36.72
240x63	4.8 / 6.0	\$ 51.40
300x45	4.8 / 6.0	\$ 45.89
300x63	4.8 / 6.0	\$ 64.24

*Other sizes available (2/3 day turn around)

DIMENSIONS (MM)	LENGTHS (M)	L/M
150X45	3.0 to 12.0m in 300mm increments	\$ 22.94
170X45	3.0 to 12.0m in 300mm increments	\$ 26.01
170X63	3.0 to 12.0m in 300mm increments	\$ 36.41
200X45	3.0 to 12.0m in 300mm increments	\$ 30.60
200X63	3.0 to 12.0m in 300mm increments	\$ 42.82
240X45	3.0 to 12.0m in 300mm increments	\$ 36.72
240X63	3.0 to 12.0m in 300mm increments	\$ 51.40
300X45	3.0 to 12.0m in 300mm increments	\$ 45.89
300X63	3.0 to 12.0m in 300mm increments	\$ 64.24
300X75	3.0 to 12.0m in 300mm increments	\$ 79.52
360X45	3.0 to 12.0m in 300mm increments	\$ 55.09
360X63	3.0 to 12.0m in 300mm increments	\$ 77.10
400X45	3.0 to 12.0m in 300mm increments	\$ 61.19
400X63	3.0 to 12.0m in 300mm increments	\$ 85.66
400X75	3.0 to 12.0m in 300mm increments	\$ 106.03
450X63	3.0 to 12.0m in 300mm increments	\$ 96.37
96X51	3.6 to 7.2m in 300mm increments	\$ 15.58
65x63	4.5m	\$ 12.12

SUBLACO RESTORATION

EST. 1981

H2 - LVL SmartFrame - Tillings

Design guides available on request. H2 LVL is treated to order, check lead time & prices.

Lengths 11.1 & longer will be charged and supplied as 12.0 m



DIMENSIONS (MM)	LENGTHS (M)	L/M
90 x 35	2.1 to 12.0m in 300mm increments	\$ 12.89
120 x 35	2.1 to 12.0m in 300mm increments	\$ 17.19
140 x 35	2.1 to 12.0m in 300mm increments	\$ 20.06
240 x 35	2.1 to 12.0m in 300mm increments	\$ 34.38
90 x 45	2.1 to 12.0m in 300mm increments	\$ 14.51
130 x 45	2.1 to 12.0m in 300mm increments	\$ 20.96
150 x 45	2.1 to 12.0m in 300mm increments	\$ 24.18
170 x 45	2.1 to 12.0m in 300mm increments	\$ 27.41
200 x 45	2.1 to 12.0m in 300mm increments	\$ 32.23
240 x 45	2.1 to 12.0m in 300mm increments	\$ 38.68
300 x 45	2.1 to 12.0m in 300mm increments	\$ 48.35
360 x 45	2.1 to 12.0m in 300mm increments	\$ 58.02
400 x 45	2.1 to 12.0m in 300mm increments	\$ 64.47
90 x 63	2.1 to 12.0m in 300mm increments	\$ 20.31
130 x 63	2.1 to 12.0m in 300mm increments	\$ 29.33
150 x 63	2.1 to 12.0m in 300mm increments	\$ 33.85
170 x 63	2.1 to 12.0m in 300mm increments	\$ 38.36
200 x 63	2.1 to 12.0m in 300mm increments	\$ 45.13
240 x 63	2.1 to 12.0m in 300mm increments	\$ 54.15
300 x 63	2.1 to 12.0m in 300mm increments	\$ 67.69
360 x 63	2.1 to 12.0m in 300mm increments	\$ 81.23
400 x 63	2.1 to 12.0m in 300mm increments	\$ 90.25
450 x 63	2.1 to 12.0m in 300mm increments	\$ 101.54
300 x 75	2.1 to 12.0m in 300mm increments	\$ 80.58
400 x 75	2.1 to 12.0m in 300mm increments	\$ 107.44
525 x 75	4.8 / 5.4 / 6.0 / 6.6 / 7.2 / 9.0 / 12.0	\$ 141.04

H2 - Smart 10 LVL Wall Stud

Engineered Timber Studs - strength rating of JD4



DIMENSIONS (MM)	LENGTHS (M)	EA
90x35	2.7	\$ 18.40

SUBLACO RESTORATION

EST. 1981

H3 - LVL SmartFrame

Design guides available on request. H3 LVL is treated to order, check lead time & prices.

Lengths 11.1 & longer will be charged and supplied as 12.0 m

525 x 75 available in 4.8, 5.4, 6.0, 6.6, 7.2, 9.0, 12.0 m lengths only.

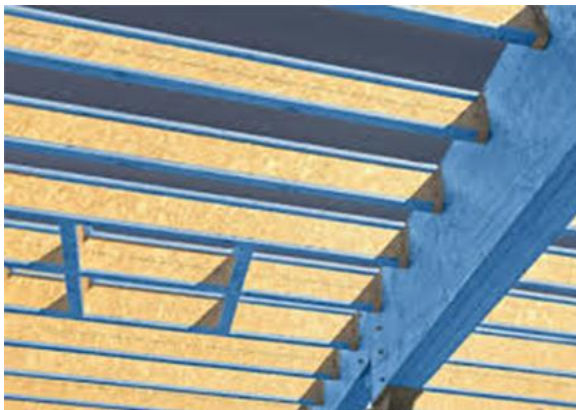


DIMENSIONS (MM)	LENGTHS (M)	L/M
90 x 35	2.1 to 12.0m in 300mm increments	\$ 13.44
120 x 35	2.1 to 12.0m in 300mm increments	\$ 17.91
140 x 35	2.1 to 12.0m in 300mm increments	\$ 20.89
240 x 35	2.1 to 12.0m in 300mm increments	\$ 35.81
90 x 42	2.1 to 12.0m in 300mm increments	\$ 17.28
130 x 42	2.1 to 12.0m in 300mm increments	\$ 24.95
150 x 42	2.1 to 12.0m in 300mm increments	\$ 28.79
170 x 42	2.1 to 12.0m in 300mm increments	\$ 32.62
200 x 42	2.1 to 12.0m in 300mm increments	\$ 38.37
240 x 42	2.1 to 12.0m in 300mm increments	\$ 46.05
300 x 42	2.1 to 12.0m in 300mm increments	\$ 57.56
360 x 42	2.1 to 12.0m in 300mm increments	\$ 69.07
400 x 42	2.1 to 12.0m in 300mm increments	\$ 76.74
90 x 58	2.1 to 12.0m in 300mm increments	\$ 24.18
130 x 58	2.1 to 12.0m in 300mm increments	\$ 34.93
150 x 58	2.1 to 12.0m in 300mm increments	\$ 40.30
170 x 58	2.1 to 12.0m in 300mm increments	\$ 45.67
200 x 58	2.1 to 12.0m in 300mm increments	\$ 53.72
240 x 58	2.1 to 12.0m in 300mm increments	\$ 64.47
300 x 58	2.1 to 12.0m in 300mm increments	\$ 80.58
360 x 58	2.1 to 12.0m in 300mm increments	\$ 96.70
400 x 58	2.1 to 12.0m in 300mm increments	\$ 107.44
450 x 58	2.1 to 12.0m in 300mm increments	\$ 120.88
300 x 75	2.1 to 12.0m in 300mm increments	\$ 95.93
400 x 75	2.1 to 12.0m in 300mm increments	\$ 127.91
525 x 75	4.8 / 5.4 / 6.0 / 6.6 / 7.2 / 9.0 / 12.0	\$ 167.88

H2 - LVL E-Beam -Wesbeam (Blue Stain)

AUSTRALIAN MADE LVL ENGINEERED FOR ROOF CONSTRUCTION

E-Beams strength-to-weight ratio is much higher than regular timber



DIMENSIONS (MM)	LENGTHS (M)	L/M
90 x 35	2.1 to 12.6m in 300mm increments	\$ 10.04
130 x 35	2.1 to 12.6m in 300mm increments	\$ 14.51
150 x 35	2.1 to 12.6m in 300mm increments	\$ 16.75
200 x 35	2.1 to 12.6m in 300mm increments	\$ 22.32
90 x 45	2.1 to 12.6m in 300mm increments	\$ 12.91
150 x 45	2.1 to 12.6m in 300mm increments	\$ 21.51
200 x 45	2.1 to 12.6m in 300mm increments	\$ 28.70
240 x 45	2.1 to 12.6m in 300mm increments	\$ 34.45
300 x 45	2.1 to 12.6m in 300mm increments	\$ 43.06
360 x 45	2.1 to 12.6m in 300mm increments	\$ 51.66
400 x 45	2.1 to 12.6m in 300mm increments	\$ 57.40
90 x 63	2.1 to 12.6m in 300mm increments	\$ 18.08
150 x 63	2.1 to 12.6m in 300mm increments	\$ 30.13
200 x 63	2.1 to 12.6m in 300mm increments	\$ 40.18
240 x 63	2.1 to 12.6m in 300mm increments	\$ 48.21
300 x 63	2.1 to 12.6m in 300mm increments	\$ 60.27
360 x 63	2.1 to 12.6m in 300mm increments	\$ 72.33
400 x 63	2.1 to 12.6m in 300mm increments	\$ 80.36

www.subirest.com.au

SUBLACO RESTORATION

EST. 1981

H2 - I-Joist SmartFrame

Design guides available on request.

360 x 90 available in 600 mm increments only.



DIMENSIONS (MM)	LENGTHS (M)	L/M
200 x 44	0.9 to 12.0m in 300mm increments	\$ 33.60
240 x 40	0.9 to 12.0m in 300mm increments	\$ 33.20
240 x 51	0.9 to 12.0m in 300mm increments	\$ 38.61
240 x 70	0.9 to 12.0m in 300mm increments	\$ 45.60
240 x 90	0.9 to 12.0m in 300mm increments	\$ 59.02
300 x 40	0.9 to 12.0m in 300mm increments	\$ 35.37
300 x 51	0.9 to 12.0m in 300mm increments	\$ 40.86
300 x 70	0.9 to 12.0m in 300mm increments	\$ 48.28
300 x 90	0.9 to 12.0m in 300mm increments	\$ 61.26
360 x 58	0.9 to 12.0m in 300mm increments	\$ 48.01
360 x 90	0.9 to 12.0m in 600mm increments	\$ 64.29

H2 - Blue Pine Framing MGP10

***Stocked**

DETAILS	DIMENSIONS (MM)	LENGTHS (M)	L/M
H2 - Treated Structural	70 x 35	3.6 / 6.0	\$ 4.88
H2 - Treated Structural	90 x 35	3.6 / 4.8 / 6.0	\$ 5.42
H2 - Treated Structural	120 x 35	3.6 / 6.0	\$ 6.68
H2 - Treated Structural	70 x 45	3.6 / 6.0	\$ 6.67
H2 - Treated Structural	90 x 45	3.6 / 4.8 / 6.0	\$ 7.48

H3 - Treated Structural

DETAILS	DIMENSIONS (MM)	LENGTHS (M)	L/M
H3 - Treated Structural	70 x 35	3.6 / 4.2 / 4.8 / 5.4 / 6.0	\$ 6.34
H3 - Treated Structural	90 x 35	3.6 / 4.2 / 4.8 / 5.4 / 6.0	\$ 7.56
H3 - Treated Structural	120 x 35	3.6 / 4.8 / 6.0	\$ 9.82
H3 - Treated Structural	140 x 35	3.6 / 4.8 / 6.0	\$ 12.38
H3 - Treated Structural	190 x 35	3.6 / 4.8 / 6.0	\$ 16.58
H3 - Treated Structural	70 x 45	3.6 / 4.2 / 4.8 / 5.4 / 6.0	\$ 8.22
H3 - Treated Structural	90 x 45	3.6 / 4.2 / 4.8 / 5.4 / 6.0	\$ 9.55
H3 - Treated Structural	120 x 45	3.6 / 4.2 / 4.8 / 5.4 / 6.0	\$ 13.71
H3 - Treated Structural	140 x 45	3.6 / 4.2 / 4.8 / 5.4 / 6.0	\$ 15.31
H3 - Treated Structural	190 x 45	3.6 / 4.2 / 4.8 / 5.4 / 6.0	\$ 20.62
H3 - Treated Structural	240 x 45	3.6 / 4.8 / 6.0	\$ 29.37
H3 - Treated Structural	290 x 45	4.8 / 6.0	\$ 41.07

H4 - Treated Structural

DETAILS	DIMENSIONS (MM)	LENGTHS (M)	L/M
Primed Laminated Dressed CCA H4 F7	44 x 44	5.4	\$ 9.87
Primed Laminated Dressed CCA H4 F7	68 X 44	5.4	\$ 14.43
Primed Laminated Dressed CCA H4 F7	88 X 44	5.4	\$ 18.86